

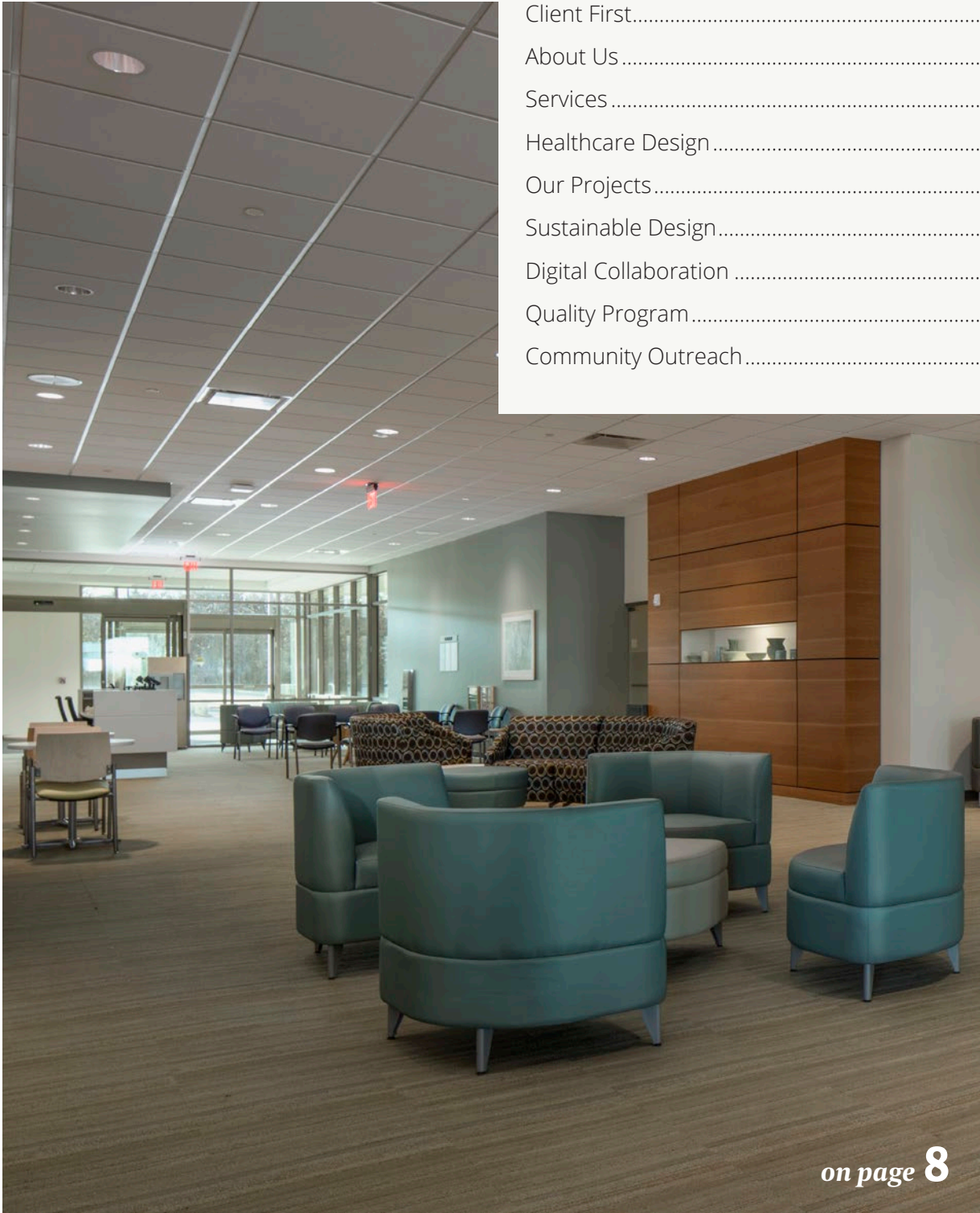
REES



HEALTHCARE

Our Qualifications

TABLE OF CONTENTS



- Client First.....1
- About Us2
- Services3
- Healthcare Design4
- Our Projects5
- Sustainable Design26
- Digital Collaboration27
- Quality Program28
- Community Outreach29

on page **8**





It sounds simple, “put our clients first”. But too often our clients tell us stories of working with previous architects who didn’t listen, weren’t responsive and assigned inexperienced staff. REES is focused on your success and every facet of our process is tailored for you and your project.

WE PUT OUR CLIENTS FIRST

RELATIONSHIP

Every client has a **direct relationship with a REES Principal** who monitors the team’s performance and coaches the project team to assure expectations are met or exceeded at all phases. Your REES Principal maintains regular contact with you and solicits feedback on our performance, constantly looking for opportunities to raise the bar.

ACCOUNTABILITY

We take ownership of our work and engage consultants who do the same. When problems arise, we quickly develop effective solutions. No diversion, no wasted energy. When you hire REES, you hire professionals who work as a team to achieve your goals and vision.

TEAM CONTINUITY

The **continuity of key team members is critical** to the success of any project. This is a key principle that never gets lost or forgotten in our process. We maintain continuity of key personnel from Programming to Planning to Design to Documentation and throughout Construction.

QUALITY ASSURANCE

Every project is assigned a Quality Control Officer who performs an independent review of the work and ensures that all checklists and procedures have been completed by the project team, including consultants. Quality is essential to the process from initial Programming through Construction and independently reviewed at each phase.

COST AND SCHEDULE CONTROLS

We **focus on Budget and Schedule planning at the earliest stages** of your project. REES tracks the team’s adherence to Budget and Schedule at all stages of design and we review and update both at team meetings. REES works closely with your General Contractor or Construction Manager to track and manage costs at all phases.

SUPPORT AFTER THE PROJECT

After the project is complete - we stay in touch! Our team will reach out to understand building performance over time. In addition we’ll share any professional photography we take of your project to help you promote your new space.

ABOUT OUR FIRM



We are dedicated to delivering exceptional design solutions. As a mid-sized architecture, planning and interior design firm, REES offers the highly specialized resources you can't get at a smaller firm and the personalized service you can't get from a big firm. We collaborate with you to deliver solutions that enrich lives and help organizations thrive.



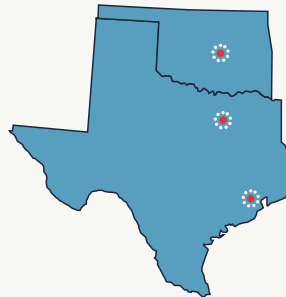
PERSONNEL RESOURCES

We are a firm of 67 professionals. We employ 23 architects, 8 interior designers, 26 production staff members and 10 administrative staff.

PROJECT TYPES

We work in complex markets where architecture is essential to our client's business including:

HEALTHCARE
CORPORATE COMMERCIAL
MULTIFAMILY & SENIOR LIVING



OFFICE LOCATIONS

DALLAS OFFICE

1025 North Stemmons Freeway
Suite 737
Dallas, TX 75207
Tel: 214.522.7337
dallas@rees.com

HOUSTON OFFICE

9595 Six Pines Drive
Suite 6240
The Woodlands, TX 77380
Tel: 713.988.7337
houston@rees.com

OKLAHOMA CITY OFFICE

9211 Lake Hefner Parkway
Suite 300
Oklahoma City, OK 73120
Tel: 405.942.7337
okc@rees.com



RECENT RECOGNITION

**SOLOMAN ANDREW LAYTON
AWARD FOR FIRM OF THE YEAR**
2022; AIA Central Oklahoma

**BEST IN ACUTE HEALTHCARE -
MERCY LOVE FAMILY WOMEN'S
CENTER**
2024; IIDA Texas Oklahoma Chapter

**BEST IN HEALTHCARE -
MERCY PRIMARY CARE CLINIC**
2021; Oklahoma Interior Design
Coalition

**BEST IN CITY CENTER - MERCY
CANCER CENTER**
2017; IIDA Texas Oklahoma Chapter

**BUILD OKLAHOMA AWARD -
STILLWATER CANCER CENTER**
2018; Associated General Contractors
of Oklahoma

OUR SERVICES



ARCHITECTURE

Architecture is at the core of what we do. Our full-range architectural services include conceptual design, schematic design, design development and construction documentation. We help you define your vision and turn it into reality.

*Design-Build - Visualization -
Value Engineering*



PLANNING

Planning is how we help define the goals for your project. We collaborate with you to determine what type of building or space you will need to meet your goals. We use exercises like visual listening and gaming to figure out the details. We also determine code circulation and financial requirements for your project.

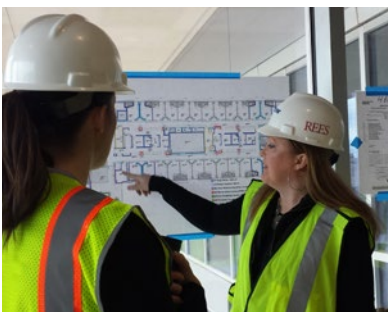
Master Plans - Feasibility Studies - Site Planning - Change Management - ADA and Code Compliance - LEED and Sustainable - Design Project Planning - Cost Control



INTERIOR DESIGN

Interior design is how people will experience your space. Our designers create innovative spaces that are more efficient, stimulate interaction and elevate your brand.

*Interior Architecture - Workplace Strategy
Furniture, Fixture and Finish Selections
Equipment Planning and Systems Integration*



CONSTRUCTION ADMINISTRATION

Your project team will follow your project through design to the end of construction. We monitor scheduling and budget to meet your project's needs. We keep a clear line of communication with contractors and the project team to ensure proper design execution.

**HIGHLY-EFFICIENT,
PATIENT-FOCUSED**



HEALTHCARE

REES was founded in 1975 as a healthcare planning firm. Our experience means we can offer you proven solutions and processes. Our team also watches the latest trends and technology to help you make informed decisions.

UNDERSTANDING YOUR NEEDS

Projects begin with planning sessions. We listen to your goals for the project and ask questions that prompt valuable discussions. By focusing on your goals from the earliest stages of the project, we work with you to identify where your investment will provide the most value. From this process, we'll create documents that outline the operational and financial impact of the project.

ON SCHEDULE, ON BUDGET

Our project design team is committed to providing expert solutions that meet your project's requirements. Our initial planning sessions will highlight options and how they could impact the budget and schedule. We will also help you focus

on critical decisions early in the design process and present you with information about the total life-cycle cost of design choices. This may allow you to save ongoing operational costs by making small changes to a design.

ALL IN THE DETAILS

We are proactive during the design process. Our team will develop design documents that provide the necessary information for any state, local and any other necessary approvals. For some projects we are able to receive approval for the construction team to start early construction packages while the documents are being completed for the building.

QUALITY ASSURANCE

Quality Assurance is always top priority at REES and we invest significant effort in systematic and thorough reviews of all our work. Internal reviews will be conducted during each phase of your project.

1975

REES brings over 45 years of
Healthcare Experience

90%

of REES Clients Continue
to Engage REES

20+

Awards for Excellence in
Healthcare Design



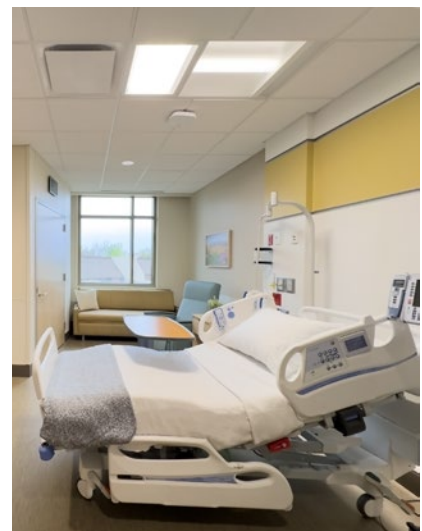
**PROJECT
EXPERIENCE**

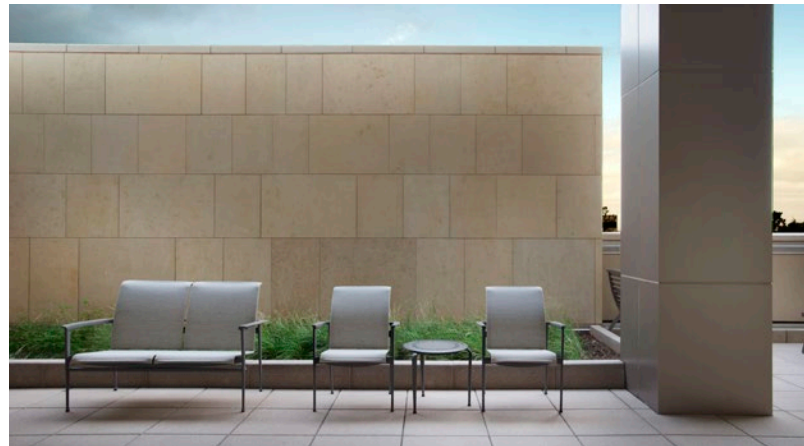
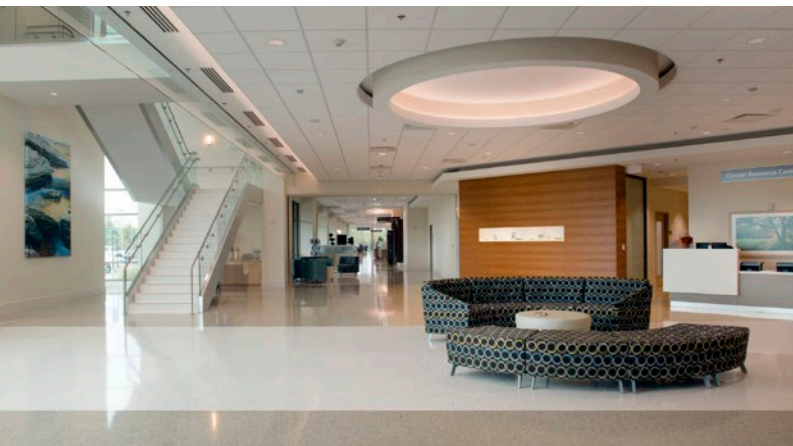


Love Family Women's Center

Mercy Hospital

The Love Family Women's Center is a comprehensive destination for women's health services, meeting the needs of a growing metropolitan area. This 175,000-square-foot center has 73 patient rooms, increasing Mercy's capacity for deliveries by 40 percent, or 6,000 births, each year. It offers the state's first low intervention birthing center with certified midwife care for unexpected complications. The facility's obstetric emergency room addresses urgent pregnancy-related concerns, another first in Oklahoma City. The center features spacious labor and delivery, postpartum, and antepartum rooms strategically located near C-section surgery suites for express emergency access. A skybridge connects to the existing hospital, providing direct access to the neonatal intensive care unit. Spaces on the ground floor are dedicated to community services such as educational childbirth classes, physical therapy, and support group meetings.





Cancer Center

Mercy Hospital

The Coletta Building is the first facility in the Oklahoma City metro area to combine all cancer and breast services under one roof. An advisory group of cancer survivors, current cancer patients and family members helped steer the design of the facility. Separate from the rest of the hospital, the Center is a private environment for treatment sessions, genetic counseling and cancer risk assessments. A specialty pharmacy, gourmet café and a women's boutique with a certified fitter for mastectomy garments and lymphedema sleeves are also on-site.



RECOGNITION

BEST IN CITY CENTER

2017; IIDA Texas Oklahoma Chapter





Primary Care Clinic and Emergency Department

Mercy Hospital

Mercy's two-story, outpatient and 24/7 emergency care facility includes a 25,000-square-foot clinic and a 15,000-square-foot emergency department. The emergency department includes one trauma room and eight exam rooms with a full imaging department. The entrance to the clinic flows into a bright and welcoming admitting area with easy access to patient services. Large windows wrap around the perimeter of the space, allowing a connection to nature and creating an open and serene environment in waiting areas. Wide and open corridors are clearly marked for patients and employees. The "split-level" concept complements the natural topography of the site and separates emergency department and clinic patients. The site also includes bike access to local trails.



RECOGNITION

BEST IN LARGE HEALTHCARE

2021; Oklahoma Interior Design Coalition

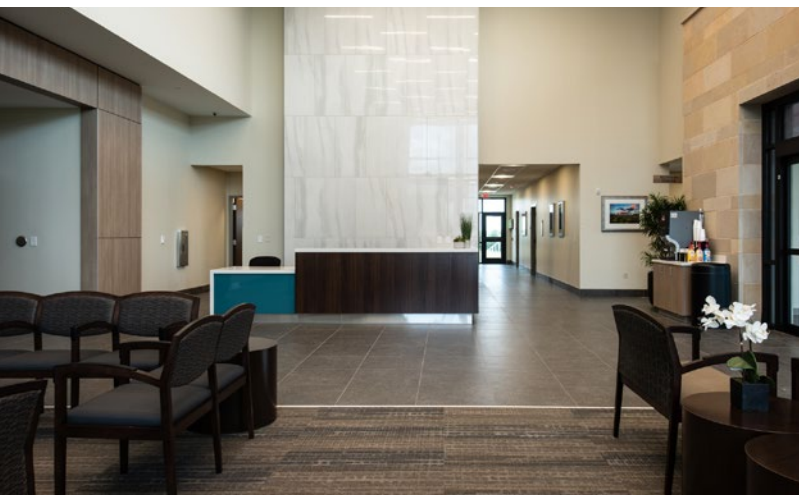


Medical Office Building

McBride Orthopedic Hospital

This 125,000-square-foot facility includes outpatient orthopedic clinic space and offices, outpatient lab and X-ray, café, retail pharmacy, outpatient IV infusion and outpatient MRI. Spacious waiting rooms, located along the central corridor of each floor, are filled with natural light. A large workspace surrounded by managerial offices is located on the second floor with large conference and break rooms. The third floor features an oversized rehabilitation and therapy wellness room, a hydrotherapy room and locker rooms with showers.

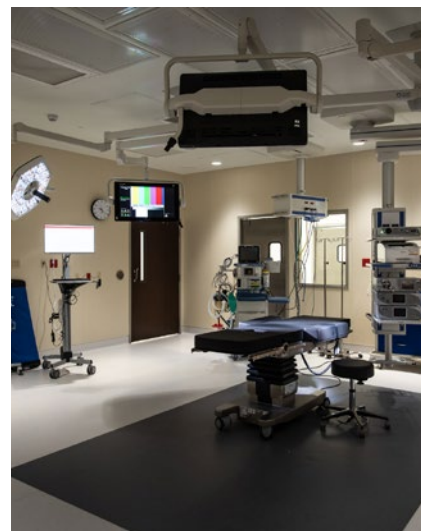




Ambulatory Surgery Center

McBride Orthopedic Hospital

McBride Orthopedic Hospital needed to expand patient services on their existing medical campus. REES designed a 35,500 square-foot building which brings six orthopedic surgical suites, a 24-bed prep and recovery unit as well as a 12-bed PACU unit to the campus. The additional surgical suites provide a beneficial alternative for patients in need of outpatient procedures focused on the knee, shoulder, foot, ankle, hip, spine, and pain management. The facility also includes clinical office space and an oversized waiting room area. A blend of metal panels, concrete and limestone detailing cover the exterior to match the rest of the campus. The large waiting room features ample natural light and wood elements, creating a warm and inviting environment for patients.

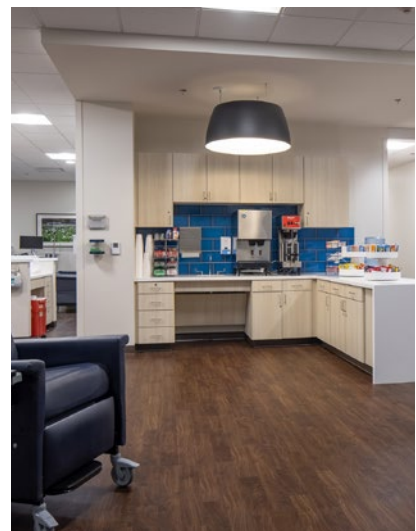




Frank C. Love Cancer Institute

St. Anthony Hospital

To better serve their patients, St. Anthony Hospital needed to overhaul the Cancer Institute on their busiest campus. The design includes renovations throughout the first floor of the Radiation Oncology department as well as the entire third floor of the Medical Oncology department. The space was carefully planned to focus on the needs of patients and their families seeking treatment, as well as the staff dedicated to their care. The new space establishes an identity for the Institute, improves patient experience and flow, and increases infusion and medical oncology capacity. Warm earth tones, abundant natural lighting and subtle blues used throughout the space create a calm atmosphere. With the opening of the new clinical space, the Institute more than doubled its size.





Women's Health Center

Stillwater Medical Center

To increase capacity for care and create a better experience for mothers and their families, Stillwater Medical Center turned to REES to revamp their Women's Health Center. 14,200 square feet of new and 11,400 square feet of enhanced space provides the environment for physicians, nurses and staff to efficiently care for more mothers and newborn babies. Included in the design are eight labor and delivery rooms, six postpartum rooms, two individual triage rooms, an expanded reception and waiting room, holding nursery as well as an on-call sleeping room. State-of-the-art patient rooms support patient stays from delivery to discharge and include private shower facilities as well as updated equipment for newborn monitoring.



RECOGNITION

PEOPLE'S CHOICE AWARD - HEALTHCARE
2024 ; AIA Central Oklahoma



Stillwater Medical Surgery Unit

Stillwater Medical Center

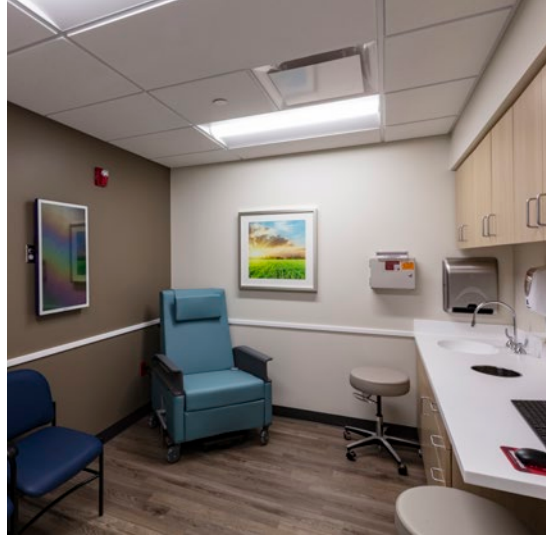
To meet the diverse surgical needs of patients and ensure seamless medical care, Stillwater Medical Center asked REES to help expand their surgical facilities. The renovation of the 19,000-square-foot existing area is complemented by the adjacent addition of 24,400 square feet. The project resulted in a comprehensive surgical department that includes 22 prep and surgery recovery rooms, seven state-of-the-art operating rooms, two surgery consultation suites, a private isolation and bariatric recovery room, four patient exam rooms, as well as an endoscopy area. The design incorporates unrestricted, semi-restricted, and restricted zones, ensuring smooth patient flow and privacy. Stillwater Medical's expansion demonstrates their commitment to exceptional surgical care across various medical disciplines.



RECOGNITION

PEOPLE'S CHOICE AWARD - HEALTHCARE
2024 ; AIA Central Oklahoma

BEST IN LARGE HEALTHCARE
2023 ; Oklahoma Interior Design Coalition

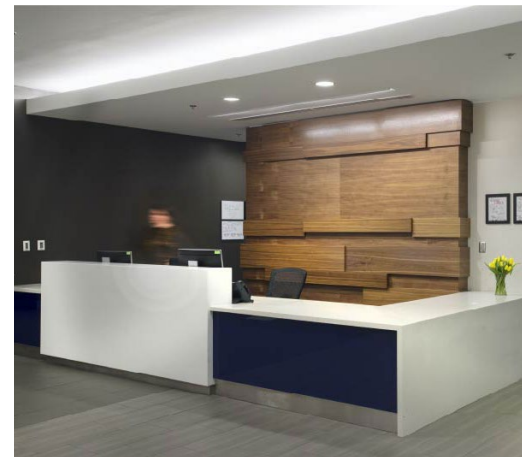


Heart and Vascular Institute

Stillwater Medical Center

Stillwater Medical's Cardiology department saw an opportunity to meet increasing demand and enhance their patients' experience with a new Heart and Vascular Institute. REES designed a 32,000-square-foot addition bringing labs, clinics and the rehabilitation gym into a centralized location. The addition was built above the existing emergency department. We worked with contractors to implement relocation sequences that limited disruption to the hospital's operations. Our team wanted the space's focus to be on patient comfort. In addition to a tranquil color palette, exam rooms have cardiac recliners instead of traditional patient beds.

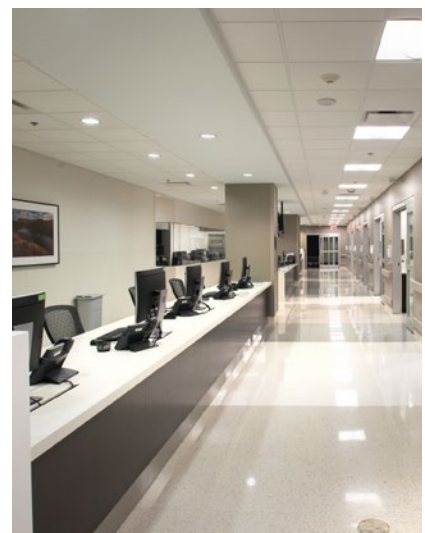




ER and Patient Room Expansion

St. Anthony Hospital

In order to meet current and future demand at its busiest campus, St. Anthony Hospital engaged REES to design a new pavilion building. The project includes a four-story expansion that houses two floors of inpatient care beds, a 38-bed critical care unit and a 20,000-square-foot emergency department with 40 exam, fast track and procedure rooms. As a result of this addition, patient flow has improved in the emergency department and the increased ED traffic has driven the growth of St. Anthony's other services.

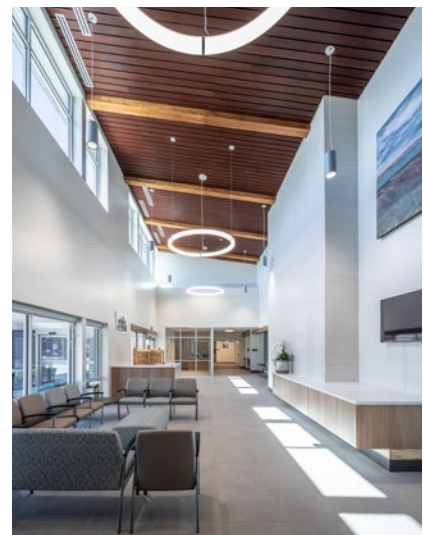




Coleman County Medical Center

Coleman County Medical Center

After performing a facility assessment, REES recommended an addition to Coleman County's existing Critical Access Hospital. The addition houses a new 25-bed inpatient unit, laboratory, nursery, imaging center, emergency department, pharmacy, and surgery. The emergency department is designated a Level IV Trauma Center by the Texas Department of State Health Services. REES assisted Coleman in community outreach and garnering support through attendance at public meetings, presentations for community education and graphics as visual aids. REES assisted the hospital in acquiring USDA funding. This project is also self-certified. The addition opened to the community in September 2022.





Kimble Rural Hospital

Kimble Hospital District

Kimble Hospital District's existing facility faced challenges created by age, size limitations, changes in healthcare delivery, code requirements and reimbursements. REES investigated three potential solutions to accommodate Kimble's needs while minimizing costs and taxpayer burden. A \$17 million bond issue was passed by the community to fund the construction of a 41,000-square-foot replacement hospital and clinic. The \$12 million Critical Access Hospital has 15 beds and a Level IV Trauma Emergency Department.



RECOGNITION

TOP 20 CRITICAL ACCESS HOSPITAL
National Rural Health Association;
2017





Covenant Hospital Surgical Suite

Covenant Hospital

Covenant Hospital in Plainview, Texas, needed to increase the size and capacity of its operating suites without impacting their ability to serve patients. REES designed a new 22,000-square-foot, second-floor surgical suite that provides six large operating rooms, two procedure rooms, private pre-op areas and a spacious recovery space. In addition, our phased construction plan ensured that the hospital and existing operating rooms remained open throughout construction. The new surgical suite will also serve as a recruiting tool, attracting skilled staff members to this healthcare facility.





Rural Hospital

McCamey County Hospital District

REES designed a 14-bed hospital, 30-bed nursing home, health clinic and support facilities. Through careful planning, REES maintained operations of the existing facility during construction and created solutions to deal with the lack of available construction labor due to the rural location and oil business boom. In order to be responsive to the hospital's budget, we used building materials and systems that are indigenous to the southwest region, sensitive to the environment and resistant to the climatic conditions of West Texas.



It has been a great pleasure working with REES. To put it simply, REES listened. They listened to all employees, and gave us the facility that we requested. I am very proud to be a part of this facility.

JAIME RAMIREZ

Chief Executive Officer
McCamey County Hospital District



Chickasaw Pharmacy

Chickasaw Nation Division of Commerce

After outgrowing their former space, Chickasaw Nation asked REES to expand their healthcare campus by adding a freestanding pharmacy. The exterior of the two-story, 36,000-square-foot was designed to match existing structures by using a blend of limestone, metal and wood. The first floor includes the pharmacy which is connected to the main hospital and has a separate exterior entrance. We incorporated a four-lane drive-thru to improve staff efficiency and patient service. A clinic and support offices, call center and wellness center make up the second floor.

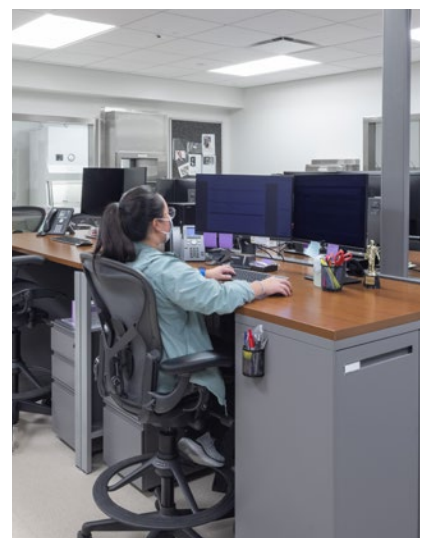




Standard of Care Pharmacy

University of Oklahoma Stephenson Cancer Center

The OU Stephenson Cancer Center needed to update a pharmacy to meet the newly implemented USP 800 standards. The necessary upgrade allowed REES the opportunity to help the pharmacists create a tailor-made space that also improved the efficiency of workflow. The expanded central room created larger and more open workstations for pharmacy staff. The addition of a steel medication pass-through apparatus connects the central pharmacy room to the hazardous mixing room, allowing for quick and seamless delivery of compounded medication from one room to the next. A custom, automatic stainless-steel door was added between the pharmacy and the anteroom where pharmacy staff scrub down and change into PPE before entering the pharmacy.



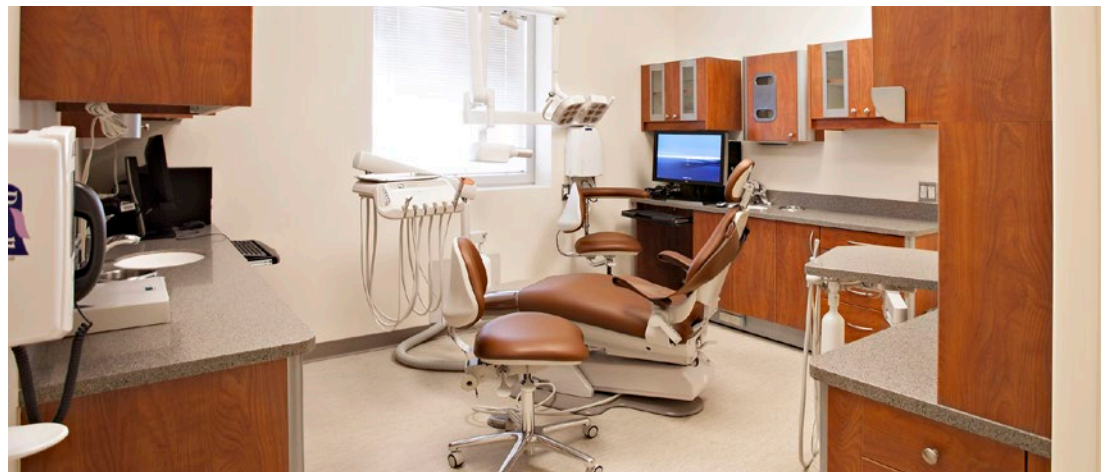


Avedis Foundation Rejuvenation Suite

SSM Health

The SSM Health Avedis Foundation Rejuvenation Suite is an in-house wellness space for front-line nursing staff. The 1,655-square-foot space was renovated into the present wellness suite. It was designed to support the health of SSM’s staff – with flexible fitness space, artwork installations, nature scenes, and dimmable lighting systems. Rooted in the most current wellness research, the Suite’s design includes multifaceted spaces for staff to partake in yoga, guided meditation, massage and reflection. Luxurious features include an enclosed “bubble wall” with LED lighting, an option to permeate the HVAC systems with aromatherapy, and a surface-mounted projector dedicated to nature-themed displays.





Veterans Administration Outpatient Clinic

McShane Development

REES designed the interior planning concept for this VA Outpatient Clinic utilizing a new Patient Aligned Care Team (PACT) operations model which embraces the planning concept coined “On-Stage/ Off-Stage.” Each of the Primary Care areas within the building utilize this concept. The exterior design of the facility gives the building a rich and timeless appearance compatible with the surrounding architecture.



RECOGNITION

MEDICAL OFFICE PROJECT OF THE YEAR – NAIOP

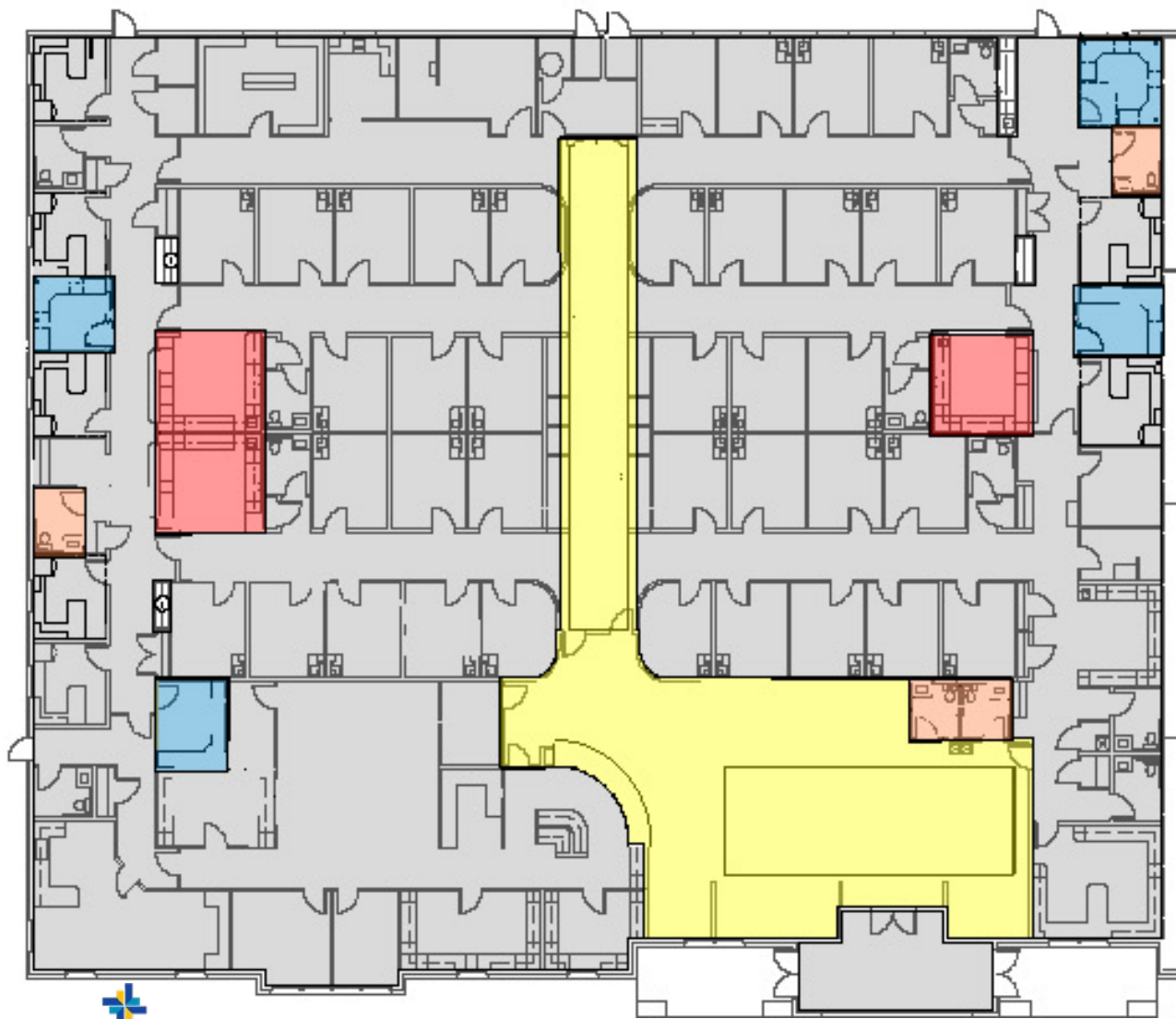
Commercial Real Estate Development Association
– Arizona Chapter



REES stood head and shoulders above other firms with their extensive healthcare projects and GSA track record. We value the ‘we are in it fully’ approach that all the professionals at REES bring to their projects.

STEPHEN DOYLE

Vice President
McShane Development

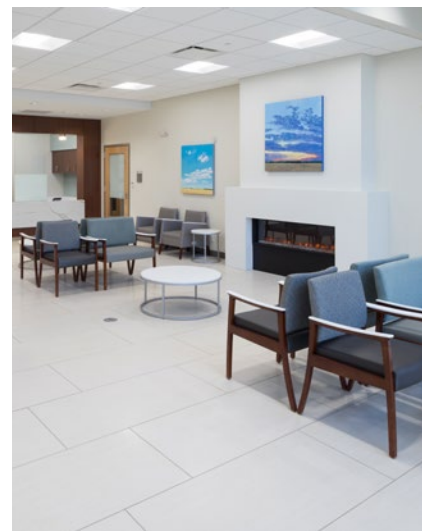


- RENOVATED AREAS**
- LOBBY/PUBLIC CIRCULATION
 - NURSE STATIONS
 - PATIENT RESOURCES
 - OFFICE/CONSULT

Master Services Agreement

Baylor, Scott and White

REES, under a master services agreement with Baylor, Scott and White, has undertaken a series of renovation projects across Texas medical centers. Finish upgrades include updating office spaces with new flooring and work surfaces, replacing light fixtures, refreshing ceilings as well as enhancing reception areas with new tile accents and wall coverings. Additional projects involve expanding provider areas to accommodate more staff, adding convenient exterior access and transforming existing spaces into private doctor telemedicine pods. Planned within active healthcare environments, these renovations aim to modernize and optimize Baylor, Scott and White's facilities, ensuring functionality and aesthetic appeal.





Pediatric Rehabilitation Outpatient Tower

Bethany Children's Health Center

A national leader in pediatric rehabilitation and complex care cases, Bethany Children's Health Center serves thousands of children each year. When the demand for outpatient services caused them to outgrow their space, Bethany asked REES to help design a new outpatient facility. The four-story, 210,000-square-foot Outpatient Tower doubles the hospital's previous operating space. In collaboration with Storyland Studios, interior floors are brought to life with iconic Route 66 characters, from the Blue Whale of Catoosa to Arizona's green dinosaurs. A landmark caterpillar structure, fondly named "Cal" and representing the transformative power of hope, climbs the building's exterior. The ground floor assists with community support services, featuring a multipurpose room, immersive theater and a conference center. The building also includes an advanced technologies lab that designs custom wheelchairs for patients, physician offices and many specialty services.





REES has a 40-year history of providing energy efficient and operationally efficient facilities with components and systems that are considered “sustainable” or “green.”



LEED CERTIFIED PROJECTS (LEFT)

Hewlett Packard Enterprise World Headquarters

Salt Lake City FBI Campus

Corpus Christi Veteran's Clinic

SUSTAINABLE DESIGN

A HOLISTIC PERSPECTIVE

Sustainability is a factor in nearly every decision our team makes. It is just good design. Our commitment to environmentally responsible design permeates our firm culture. Currently, more than two-thirds of our design and technical staff hold the LEED AP credential. All members of the REES Leadership team hold the LEED AP credential.

From Pre-Design through Construction Administration, our professionals strive to make environmentally-conscious choices. Building orientation, selection of energy efficient systems, daylighting elements, specification of finishes, water management, recycling and numerous other considerations are factored into our design and construction work plan.

Our project teams are adept at finding cost-effective or cost-neutral methods to implement sustainability into any project, large or small. Ultimately, we believe that the choices we make as designers and planners not only have a positive impact on the Earth but serve to make the built environment healthier and more productive.

We use the USGBC LEED Project Checklist as a tracking and communication tool.

While we endorse the program for LEED Certification, we recognize that some projects will not be certified for a variety of reasons. Regardless of whether our clients choose to certify or not, they want to make good decisions about energy, resources and the environment. Our team is committed to providing options for informed decisions and the delivery of high-performing design solutions.



DIGITAL COLLABORATION

HOW WE WORK

REES works with clients across the country so digital collaboration is a daily part of how we work.

EASY CONNECTIONS

When a question comes up, your project manager is just a call, text or email away. If you need to review a document or photo, any of our team members can start a quick screen share. In addition, our team is able to work remotely from home or while traveling.

DIGITAL DESIGN REVIEW

Our clients often prefer to hold design review meetings online so their team can participate from multiple locations. We can review your project layout, interior selections and renderings virtually.

VISUALIZATION

Renderings and project walk-throughs help us communicate about the direction of the design. By having an in-house visualization team, we can rapidly update the design and show you the results. Often we'll share our REVIT model on-screen and make updates in real time during the meeting to ensure we capture your feedback.

TOOLS

Part of our initial discussions will be understanding how your team prefers to work. We then adapt our processes to fit you. If you don't have a preference, we'll recommend the following tools:

- Conference Calls and Online Meetings - Microsoft Teams
- Design Software - Autodesk REVIT
- Design Document Management - Autodesk Construction Cloud
- Sharing Large Files - OneDrive

DATA SECURITY

Your projects are vital to your organization and we understand the importance of keeping the related data secure. We conduct regular audits of our technology infrastructure and security. For data stored in the cloud, we've selected top tier providers with a reputation for security. We also maintain business continuity plans and back-ups of all project and business critical data.

QUALITY PROGRAM

OUR COMMITMENT TO YOU

The REES mission is to deliver exceptional design solutions in an environment that is client focused, innovative, creative and collaborative. To achieve our mission, we recognize that our work is our reputation. To hold ourselves accountable to our clients and each other, REES has created a Quality Program.



REES' QUALITY PROGRAM HAS THREE MAIN ELEMENTS:

Quality Assurance is the way we do our work. This stage of our quality process happens during the design phases of our projects. Our project managers, architects and designers each have guidelines that they use to ensure projects meet our standards.

Quality Control is the process for reviewing our work before it is delivered to clients. Every project at REES goes through our Quality Control process before final construction documents are delivered to you. This process includes a senior member of our team who hasn't been closely involved with the production of the documents, reviewing every drawing for accuracy and meeting our quality standards. Much like a proofreader for a written document, this person ensures that our documents meet our high-quality standards.

Quality Improvement is how we take lessons learned and apply them to future projects. At the end of each project our team reviews our work and identifies any areas for improvement on future projects. We then share these opportunities with the rest of the team so all of our clients benefit from our continual improvement.

Your Principal-In-Charge will check in on a monthly basis to determine your overall satisfaction. This keeps the lines of communication open and gives you a built-in opportunity to tell us how we can better meet your needs.

We will follow up with you 90 days after occupancy to make sure your project is performing as planned.



REES team members
volunteer for over

50

local and national
organizations



COMMUNITY OUTREACH

ADVOCATES FOR ACTIVE INVOLVEMENT

The REES Values encourage active participation in our communities and professions. Together, our team strives to support great causes that improve quality of life for the communities in which we practice. We lead and volunteer in multiple professional organizations, non-profit groups, and religious affiliations.

ARCHITECTURE

- American Institute of Architects
- American Society of Landscape Architects
- Commercial Real Estate Council
- Construction Specifications Institute
- International Interior Design Association
- International Facility Management Association
- Latinos in Architecture
- LeadingAge
- Retrospect - AIA Dallas
- National Council of Architectural Registration Boards
- National Organization of Minority Architects
- Latinos in Architecture – AIA Dallas
- Urban Land Institute

BUSINESS

- Corenet Global
- Dallas Chamber of Commerce
- Leadership Dallas
- Leadership Oklahoma City
- Society for Marketing Professional Services
- Greater Oklahoma City Chamber

COMMUNITY

- Allied Arts
- Boys and Girls Club
- CREW Dallas
- Dallas LIFE
- Feed Lake Highlands
- Focus on Home
- Gingertown
- Hearts and Hammers
- Habitat for Humanity
- KIDWorks
- Mercy Street Dallas
- Oklahoma Cityscape
- SPCA of Texas
- United Way of Central Oklahoma
- Urban Land Institute
- World Neighbors

FAMILY

- Church on the Rock Food Distribution
- Potts Family Foundation
- St. Baldrick's Foundation
- Sunbeam Family Services

EDUCATION

- Boy Scouts of America
- Girl Scouts of the USA
- Junior Achievement
- Moore Public Schools – PTA
- Norman Public Schools
- Oklahoma City Children's Museum
- Oklahoma Foundation for Excellence
- University of Oklahoma
- College of Architecture
- Texas A&M College of Architecture

HEALTH

- Bethel Foundation
- Children's Craniofacial Association
- Make-A-Wish Foundation
- Oklahoma Blood Institute
- Oklahoma Kids Korral
- Toby Keith Foundation OK Kids Korral
- Wish with Wings

SPORTS

- Moore Youth Baseball Association
- Special Olympics



CREATING PLACES YOU WANT TO BE

DALLAS

1025 North Stemmons Freeway, Suite 737
Dallas, Texas 75207
214.522.7337

HOUSTON

9595 Six Pines Drive, Suite 6240
The Woodlands, Texas 77380
713.988.7337

OKLAHOMA CITY

9211 Lake Hefner Parkway, Suite 300
Oklahoma City, Oklahoma 73120
405.942.7337

rees.com