

An architectural rendering of a modern medical building with a large, curved, light-colored overhang. The building has large glass windows and stone pillars. In the foreground, there is a paved courtyard with a large, circular, light-colored design on the ground. Several cars are parked in the courtyard: a black sedan, a white sedan, a grey sedan, and a white SUV. There are also some trees and a small landscaped area with a sign that reads "DAVID R. BROWN MD. ADVANCED HUMAN IMAGING CENTER. Made possible by The Samuel Roberts Noble Foundation." and "OMRF".

REES

OMRF

Imaging Center | March 2025

DEDICATED PROJECT TEAM



FAROOQ KARIM
Principal-in-Charge



MELANIE COMPTON
Project Manager



LIBBY GOBER
Interior Designer



JESSICA ZVONEK
MEP Engineer



JOSH DOUGHERTY
Civil Engineer



LARRY CURTIS
Structural Engineer

REES



MELANIE COMPTON

HEALTHCARE EXPERTS

PROJECTS	MRI	LINAC	PET CT	CT
Stillwater Medical Center	✓	✓	✓	✓
Mercy Ardmore: Cancer Center	✓	✓	✓	✓
Mercy OKC: Coletta Cancer Center	✓	✓		
Mercy Ada	✓			✓
Mercy Edmond				✓
St. Anthony Hospital	✓	✓		✓
McBride Medical Office Building	✓			
Hereford Hospital	✓			✓
Grady Memorial Hospital	✓			✓
Mercy OKC Emergency Department				✓
Mercy Springfield				✓
OU Health		✓		
OU Edmond	✓			

1975

REES was
established in OKC
as a healthcare firm
50 years ago

780+

Healthcare
Projects in the last
20 years

185

Hospital Projects
in the last 20 years

6M

Square feet of
healthcare space
designed in the last
20 years

FULL SERVICE, MULTIDISCIPLINE ENGINEERING FIRM

SERVICES

Architectural Engineering

- Commissioning
- Electrical
- Mechanical
- Structural
- Sustainability Services
- Technology Design

Civil Engineering

- Bridge
- Community Planning & Development
- Highway
- Municipal and Water/Wastewater
- Municipal Transportation
- Site Civil
- Water Resources

Energy Engineering

- Power
- Process Piping

Field Engineering

- Geotechnical
- Inspection
- Materials Testing
- Owner Representation
- Survey
- Survey Processing



MARKETS

- Commercial
- Education
- Energy
- Federal
- Healthcare
- Industrial & Manufacturing
- Mission Critical
- Municipal
- State
- Transportation

ENR
THE TOP 500
DESIGN FIRMS

PEC has ranked among the Top 500 Design Firms nationwide by *Engineering News Record* since 1991.

52

Years in business

30

Full-time Staff

5

Minutes away from
OMRF

>150

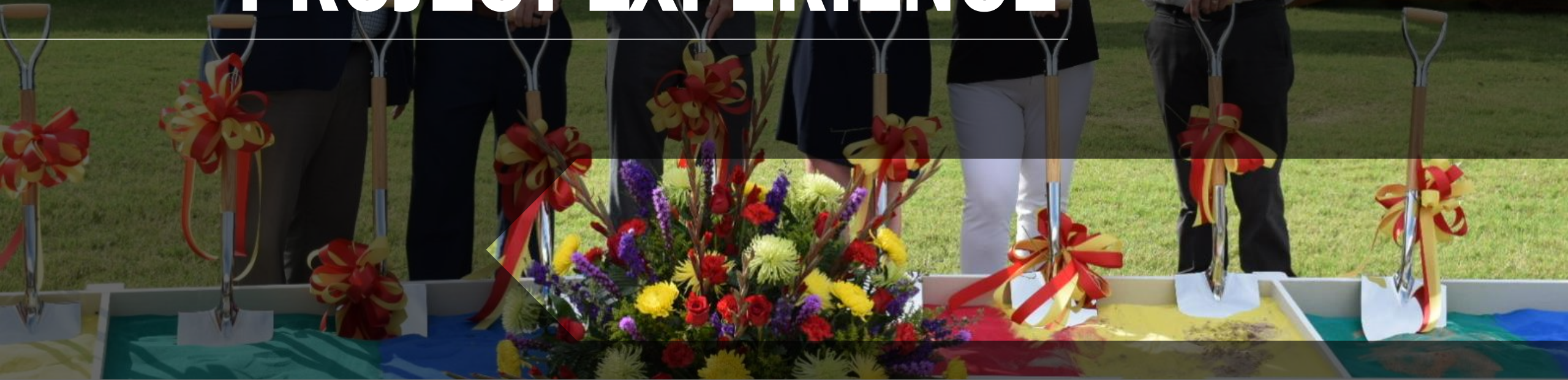
Healthcare Facilities
Designed, including
MRI Facilities

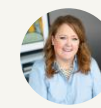




MELANIE COMPTON

PROJECT EXPERIENCE





MELANIE COMPTON



LIBBY GOBER

PROJECT EXPERIENCE WITH SIMILAR ENTITIES

MAJOR HEALTHCARE & RESEARCH INSTITUTES



MERCY HEALTH
13 YEARS
250 PROJECTS



OU HEALTH
25 YEARS
55 PROJECTS



STILLWATER
MEDICAL CENTER
25 YEARS
150 PROJECTS



SSM HEALTH
19 YEARS
91 PROJECTS



Stillwater Medical Center
Cancer Center



MELANIE COMPTON





Mercy Oklahoma City
Coletta Cancer Center

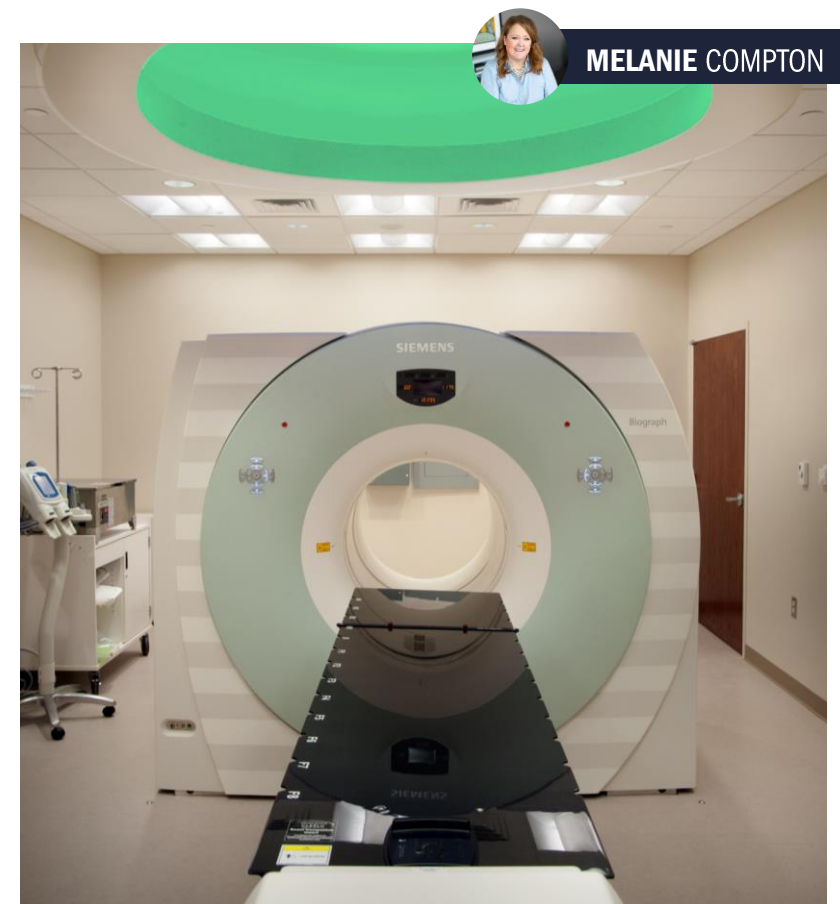


MELANIE COMPTON





Mercy Ardmore
Cancer Center



MELANIE COMPTON





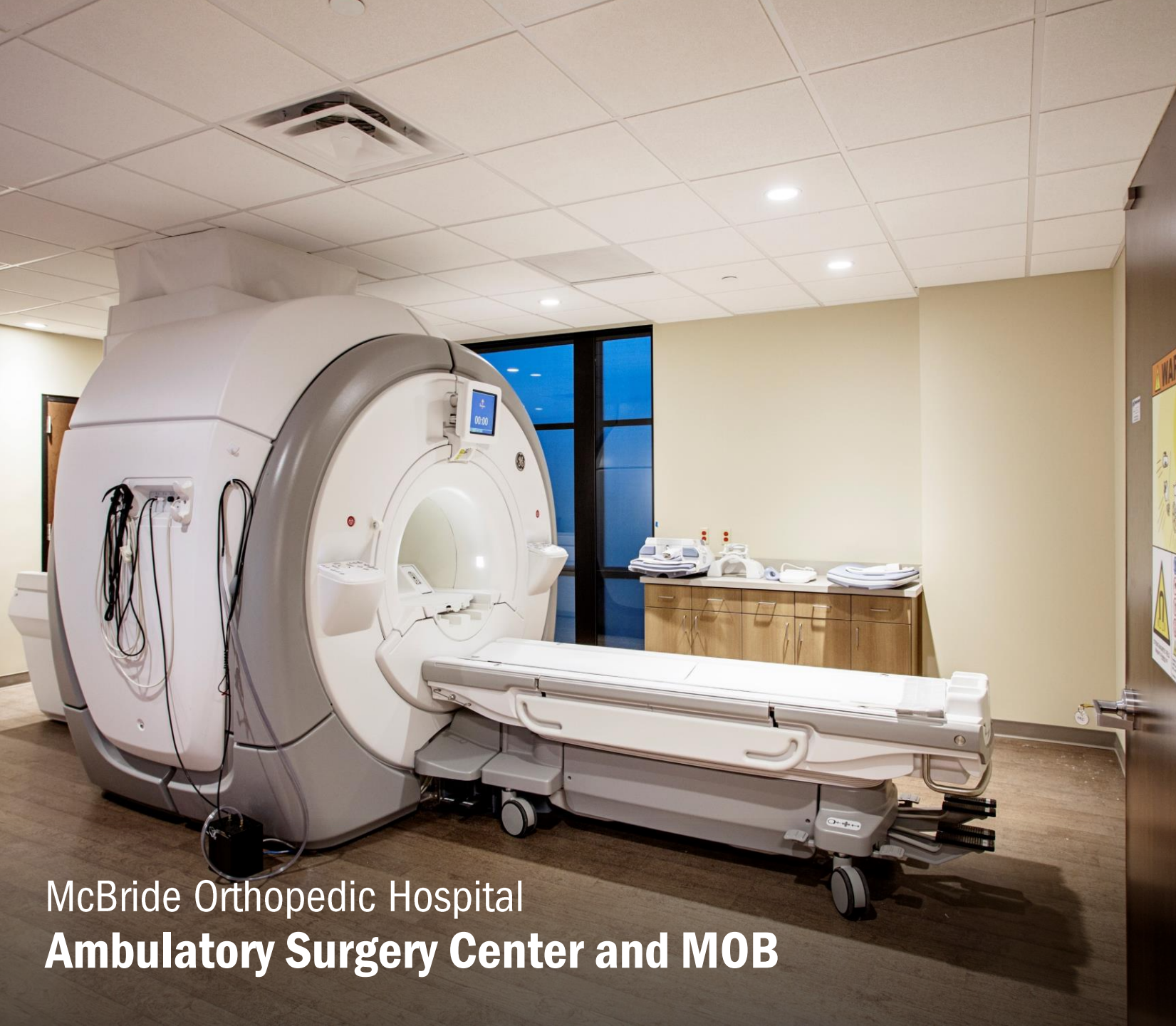
MELANIE COMPTON



OU Health
Stephenson Cancer Center

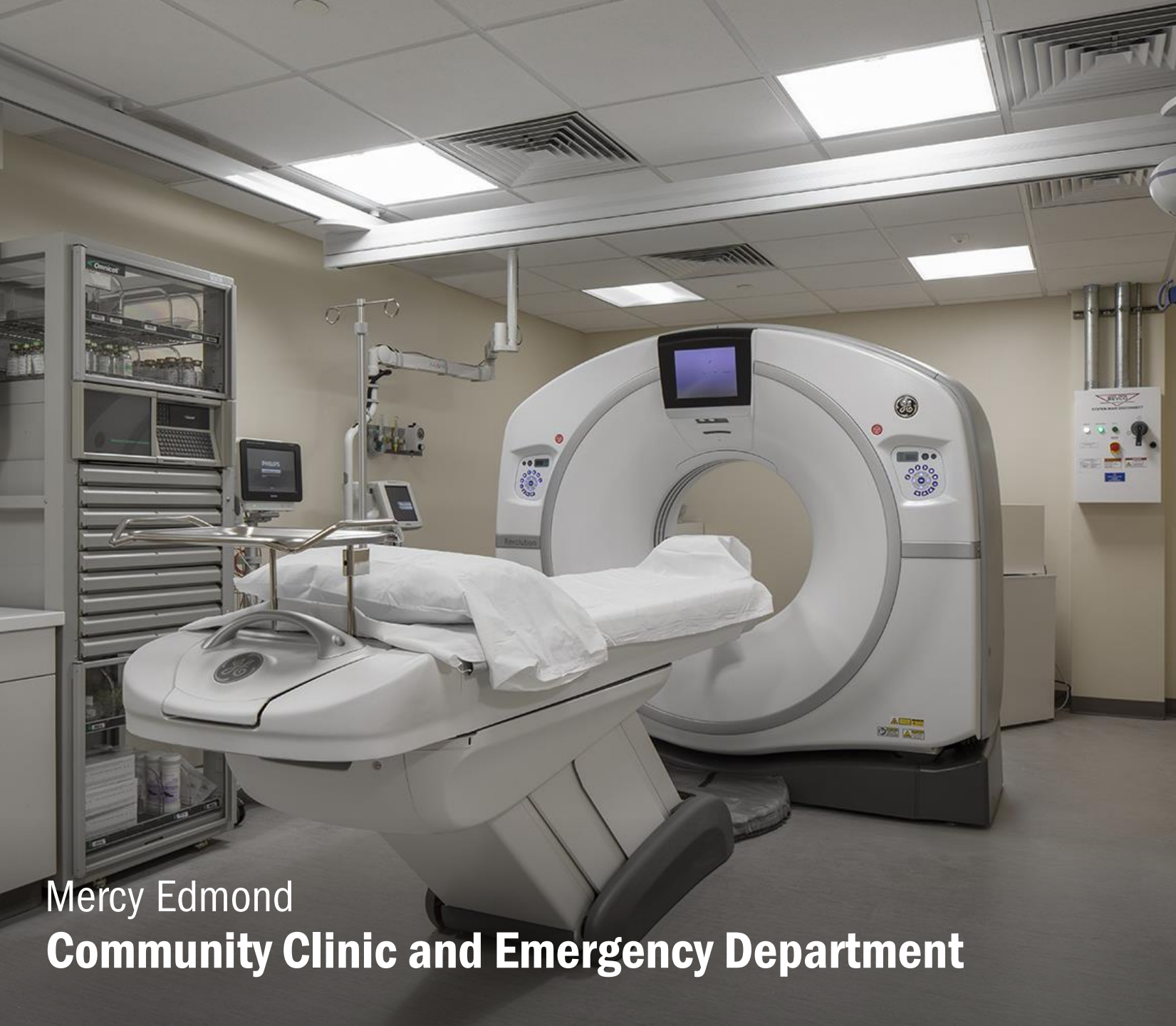


MELANIE COMPTON



McBride Orthopedic Hospital
Ambulatory Surgery Center and MOB





Mercy Edmond
Community Clinic and Emergency Department



MELANIE COMPTON





MELANIE COMPTON

YOUR PROJECT

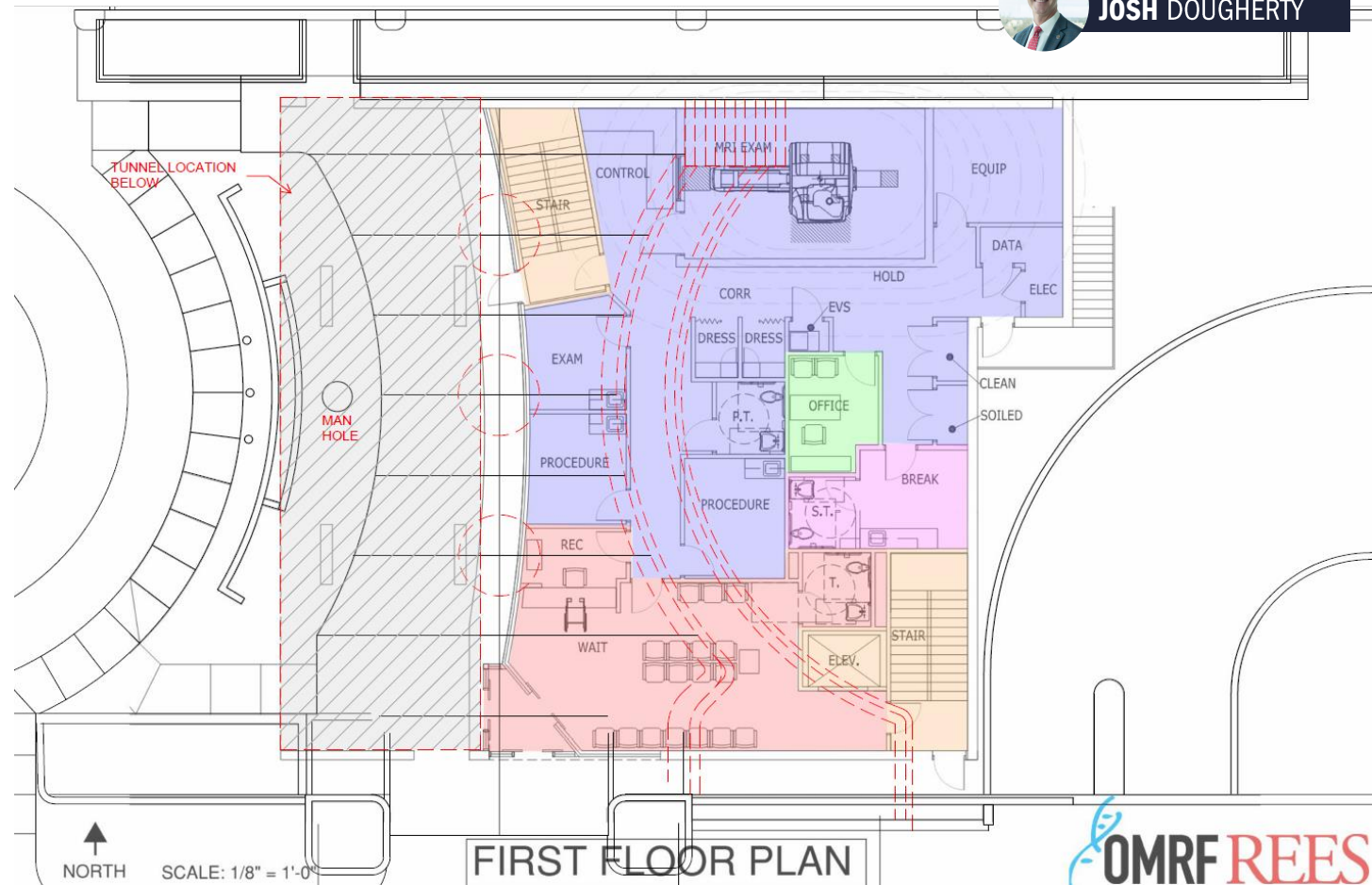


DAVID R. BROWN MD.
ADVANCED HUMAN IMAGING CENTER
Made possible by The Samuel Roberts Noble Foundation



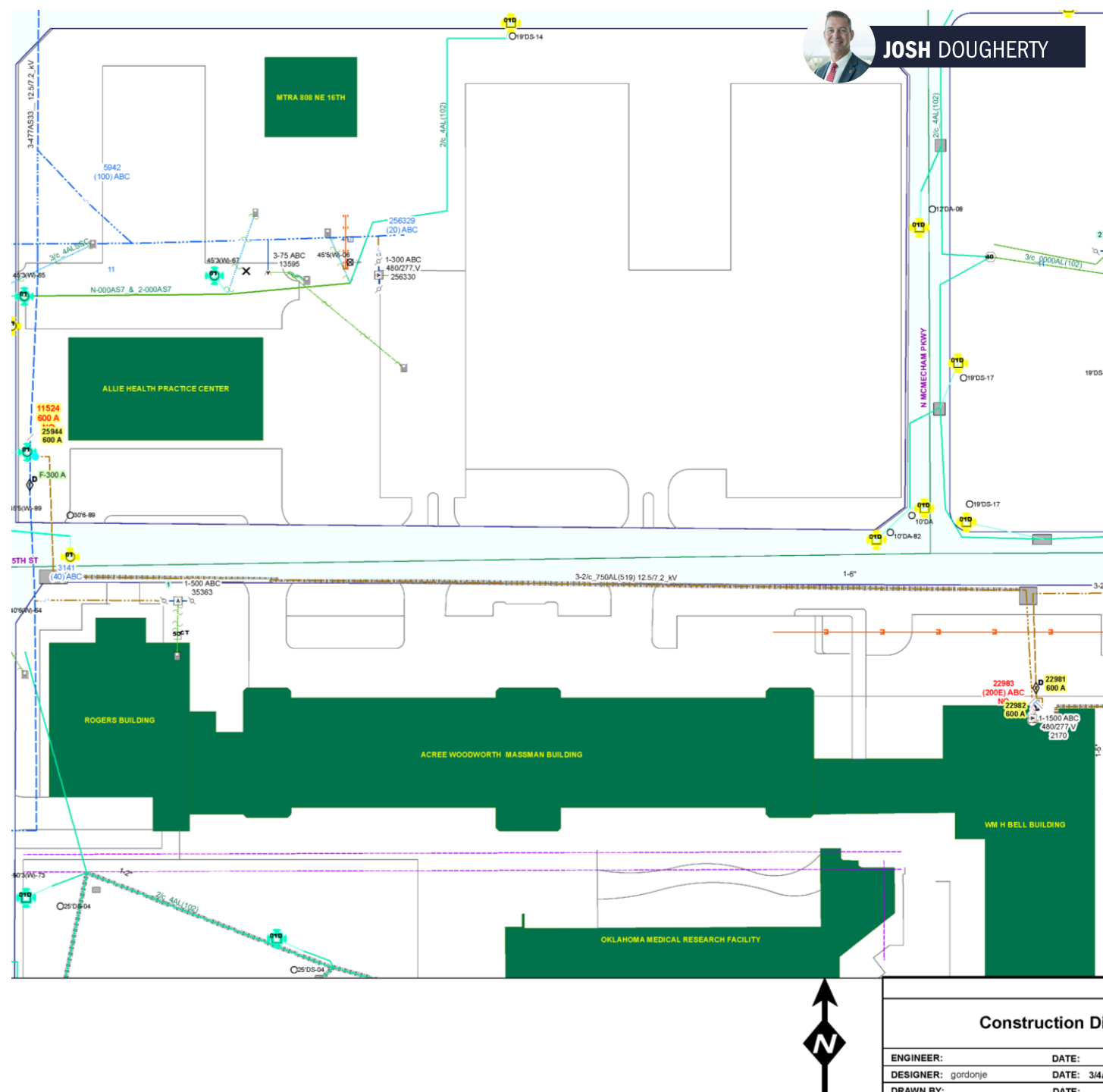
SITE CONSIDERATIONS

- Capital Medical Center Improvement & Zoning District
- Sloping of Site – Meeting ADA standards
- Large drop off on the east side that will require a retaining wall
- Tunnel Location & Manhole
- Existing City of OKC waterline (6") just north of existing building
- Public sanitary sewer location



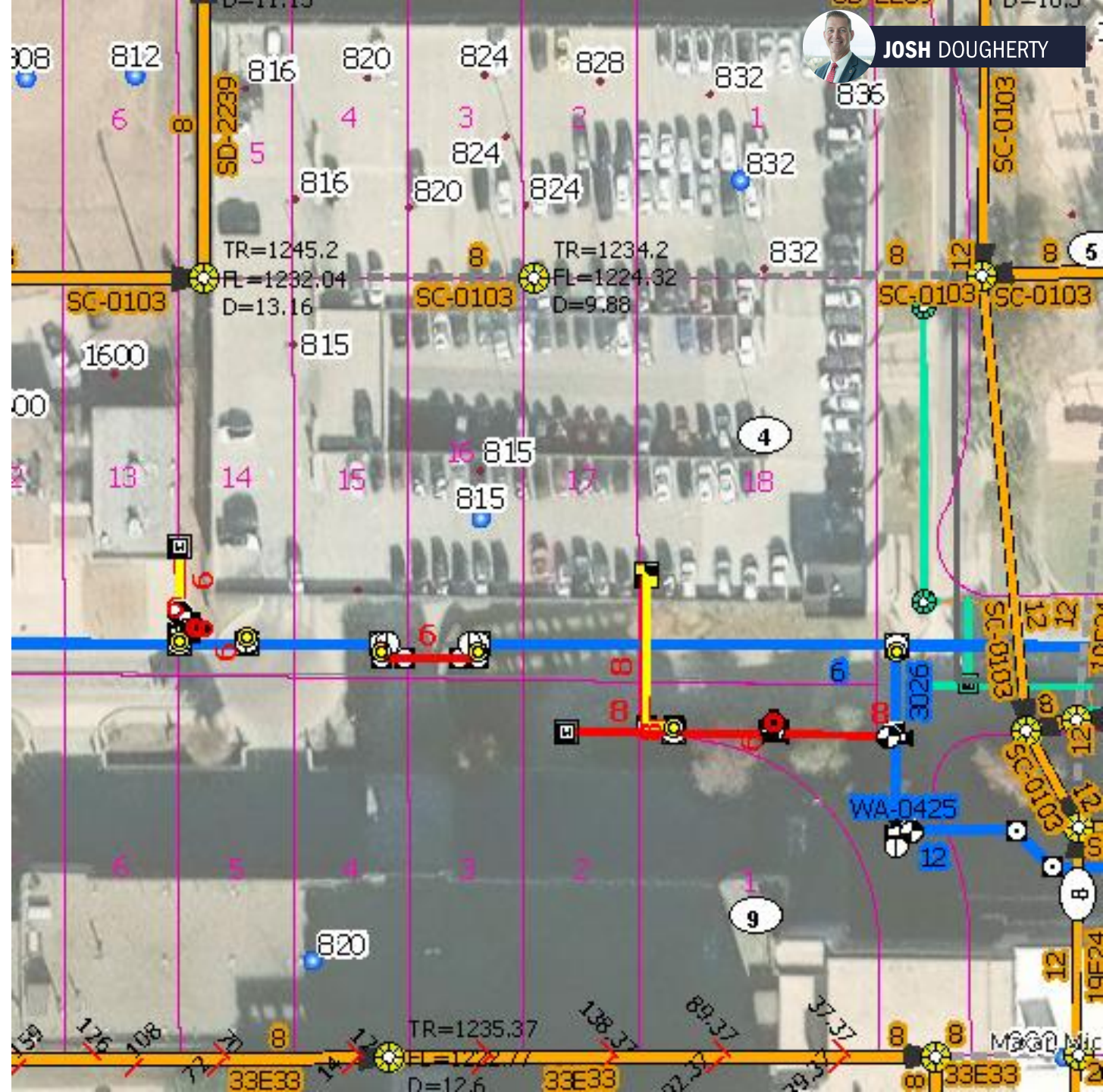
SITE CONSIDERATIONS

- Capital Medical Center Improvement & Zoning District
- Sloping of Site – Meeting ADA standards
- Large drop off on the east side that will require a retaining wall
- Tunnel Location & Manhole
- Existing City of OKC waterline (6") just north of existing building
- Public sanitary sewer location



SITE CONSIDERATIONS

- Capital Medical Center Improvement & Zoning District
- Sloping of Site – Meeting ADA standards
- Large drop off on the east side that will require a retaining wall
- Tunnel Location & Manhole
- Existing City of OKC waterline (6") just north of existing building
- Public sanitary sewer location

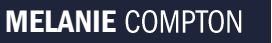




SCALE: 1/8" = 1'-0"

FIRST FLOOR PLAN

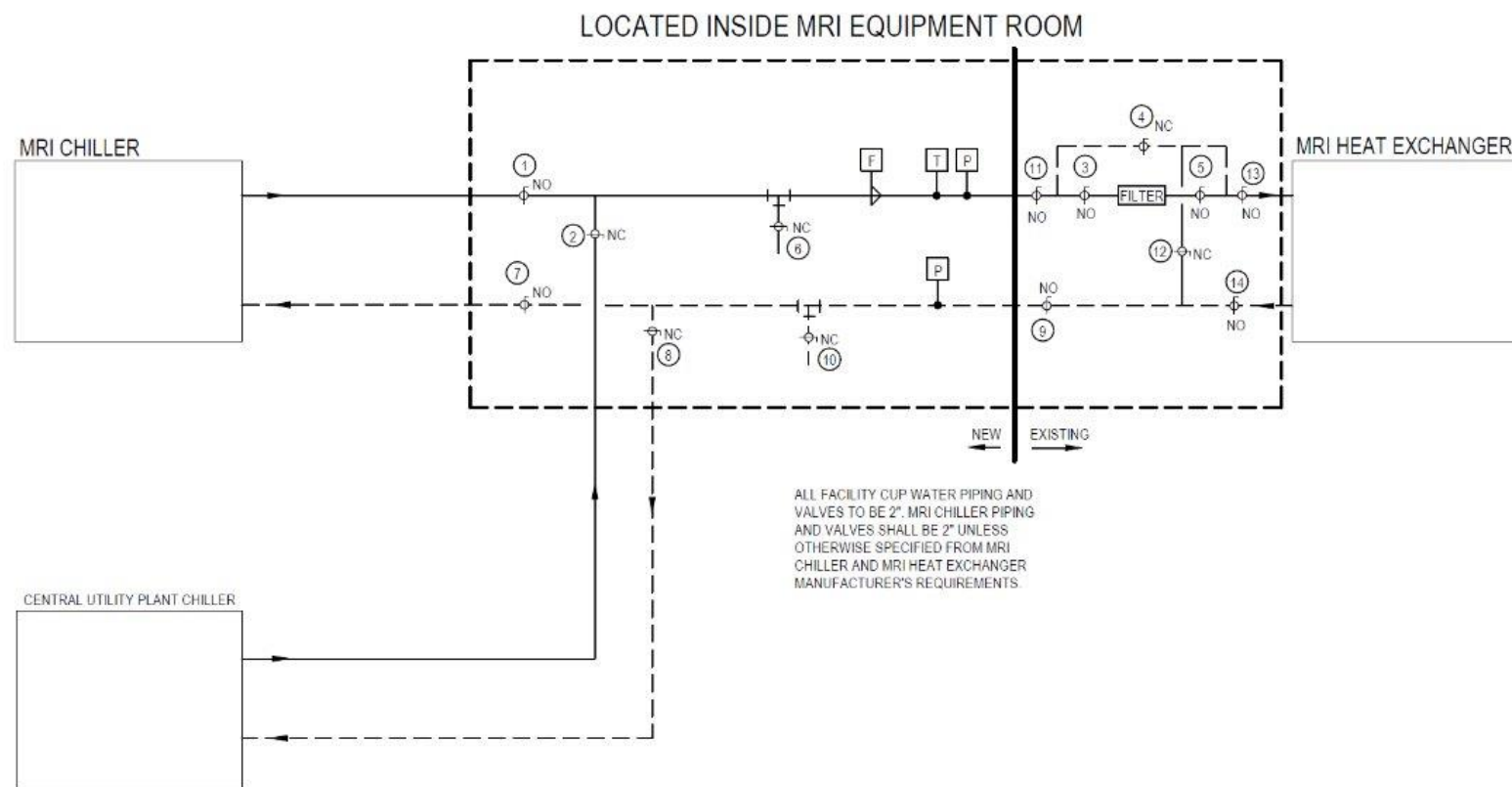






MRI DESIGN CONSIDERATIONS

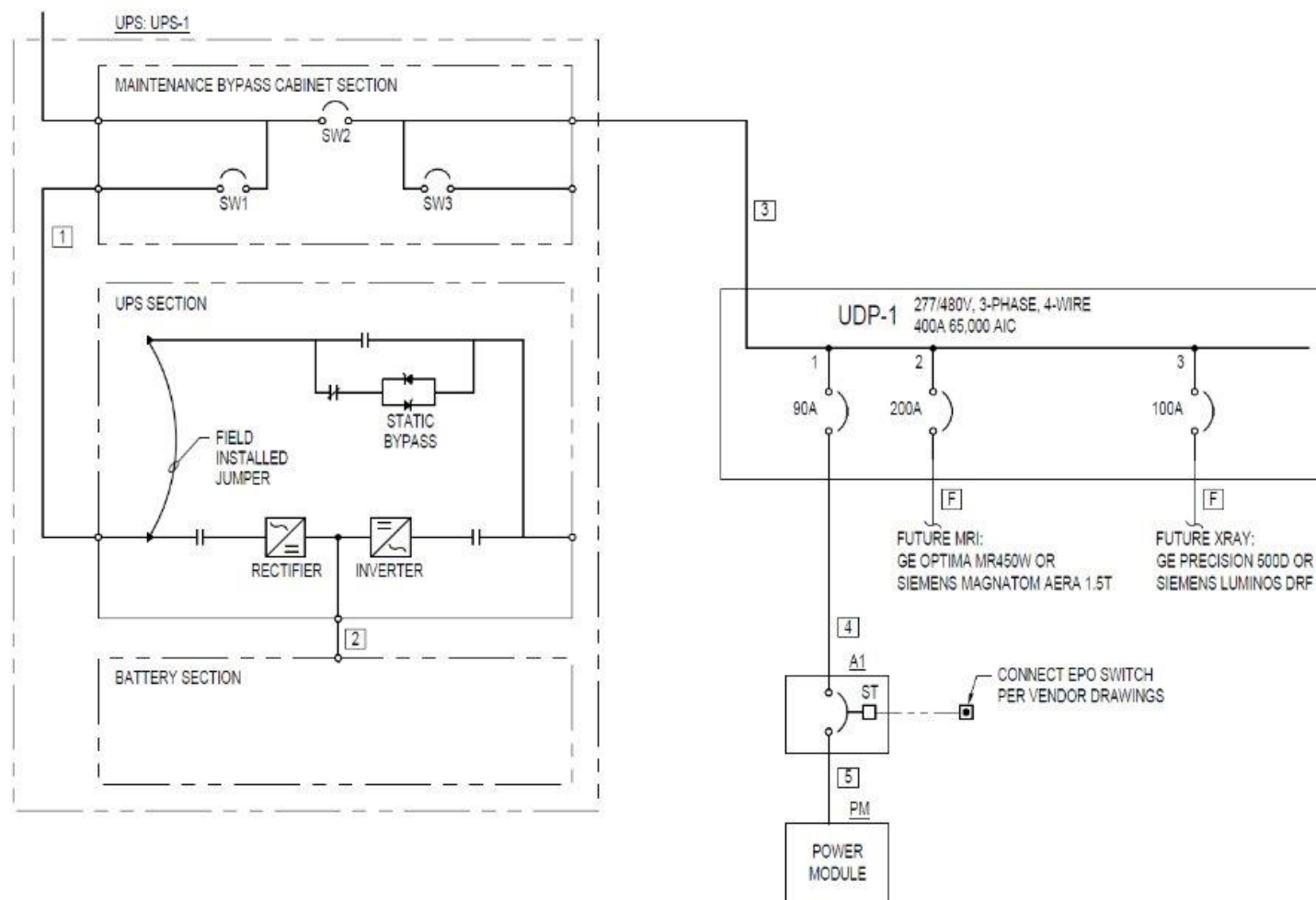
- Coordination with shielding
- Non-ferrous material
- Fire suppression
- Quench vent coordination
- Emergency exhaust
- Humidification/Dehumidification
- MRI components cooling
- Separate imaging chillers
- Central plant
- Combination of both
- Domestic water backup
- Water quality
- MRI equipment room cooling
- Licensing





MRI DESIGN CONSIDERATIONS

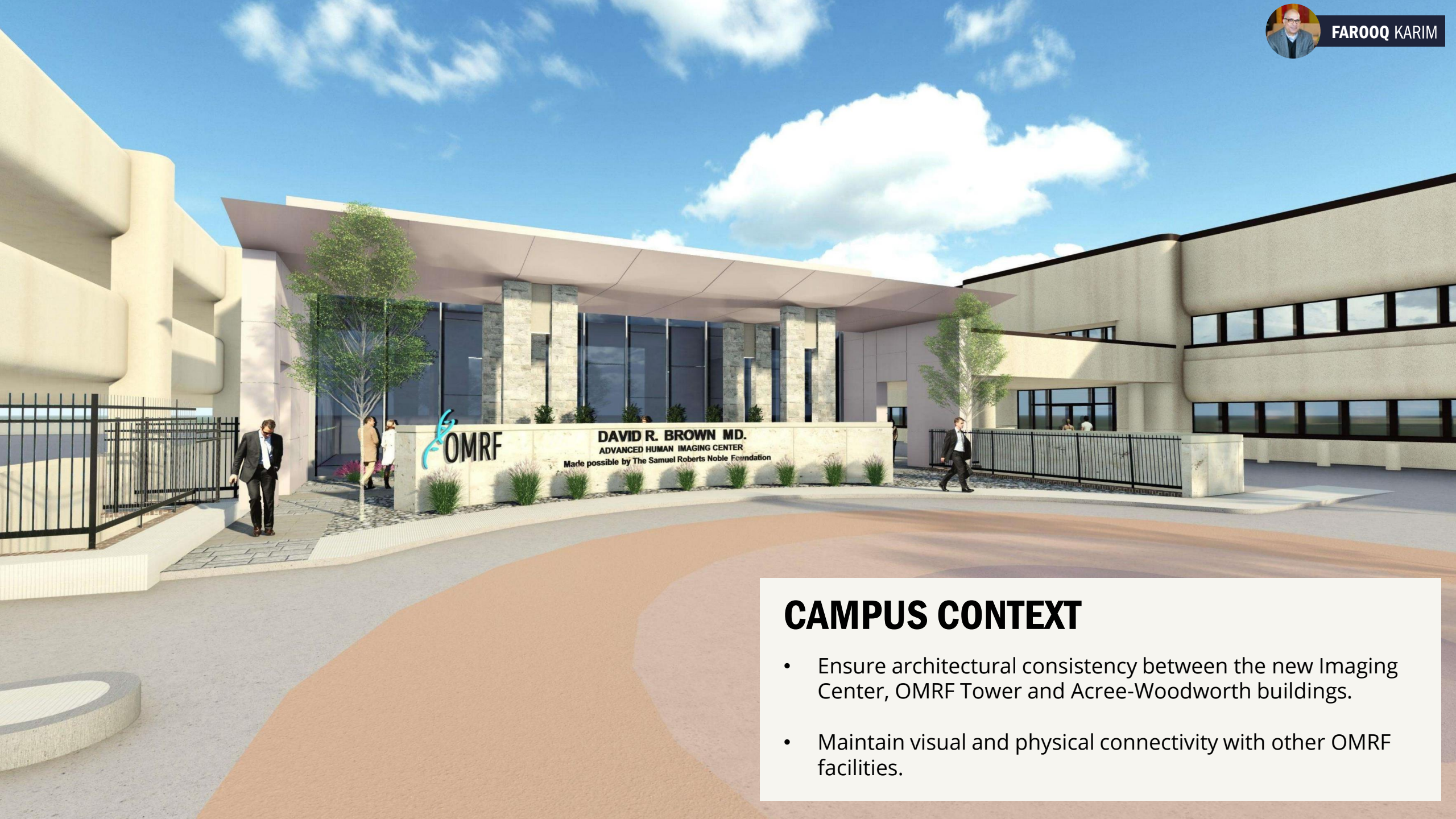
- Coordination of power
- Dye/injection systems and pathways
- Power quality considerations (e.g. UPS for imaging system)
- Electrical pathways
- Standby power considerations
- Entire system must be on standby to function on emergency power
- “Life support” only requires helium system
- MRI room-specific lighting systems
- Displays, intercommunications, or music systems
- Controlled access to all zones



STRUCTURAL CONSIDERATIONS

- North and south walls of the new MRI building will likely need to be rated, due to their proximity to the Parking Garage (to the north) and the existing research building (to the south).
- New foundations (likely pier and grade beam) designed to clear the parking garage and tunnel foundations.
- Coordinate foundations with utilities.
- Confirm tunnel wall and parking garage retaining wall at lower level can support Imaging center first floor slab-on-ground and live load.
- MRI support foundations likely to be pier supported to avoid surcharge loading.
- Design roof access panel to pull MRI for servicing. Verify crane placement to boom to access.
- Coordinate support of MRI per supplier's criteria for load and movement.





CAMPUS CONTEXT

- Ensure architectural consistency between the new Imaging Center, OMRF Tower and Acree-Woodworth buildings.
- Maintain visual and physical connectivity with other OMRF facilities.



CAMPUS CONNECTION

- “OMRF’s Front Door” - Consider pedestrian flow, accessibility, and adjacency to existing parking and entries.



DAVID R. BROWN MD.
ADVANCED HUMAN IMAGING CENTER
Made possible by The Samuel Roberts Noble Foundation

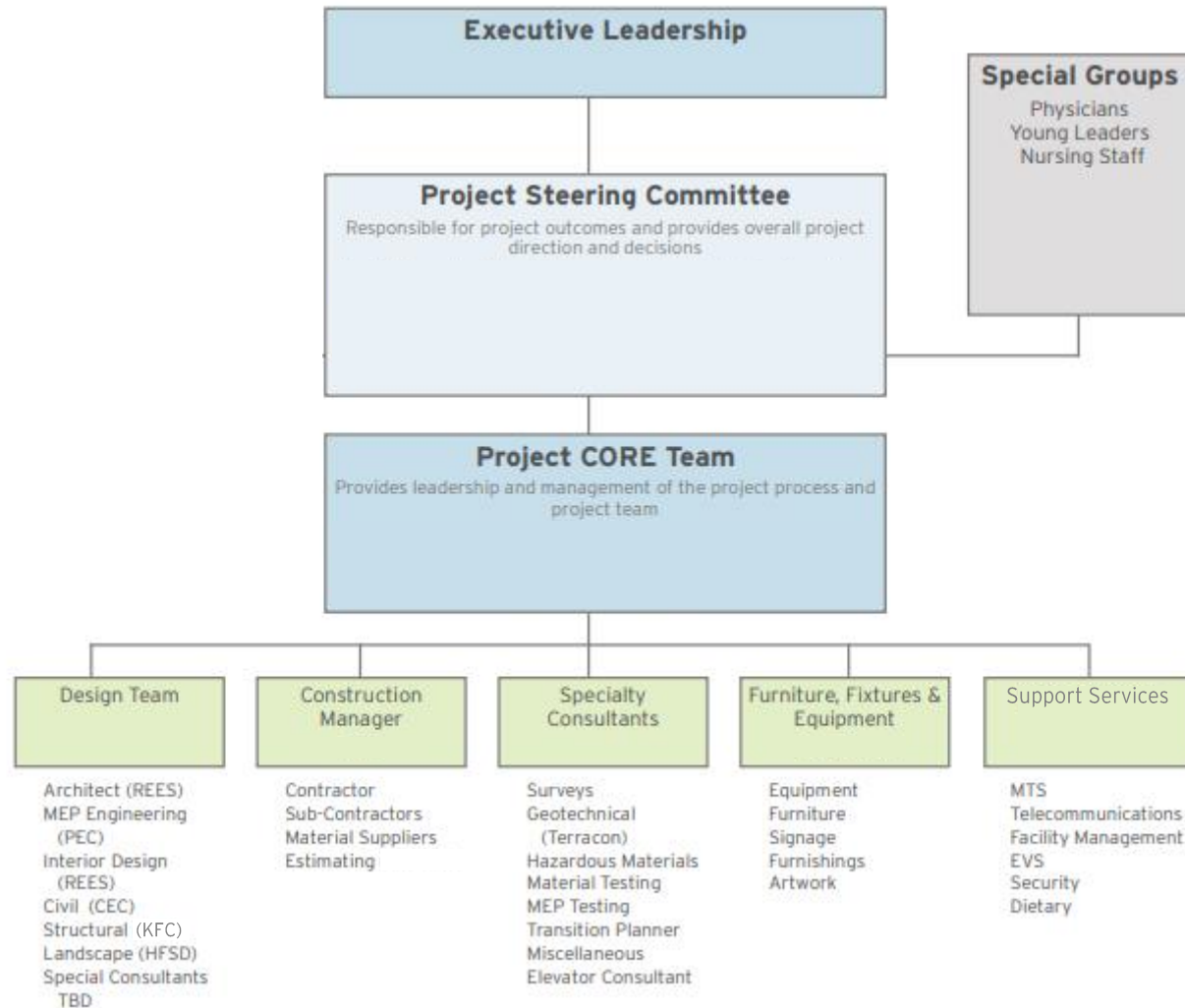


A photograph of three people in a modern office setting. A woman in a white blouse stands in the center, smiling and looking down at her hands. To her right, a man in a blue sweater sits at a round wooden table, looking towards her. To her left, another woman with dark hair, wearing a colorful patterned top, sits at the same table, looking towards the standing woman. The table is covered with large architectural drawings and a white folder. The background wall is covered with numerous framed architectural plans and photos. A large window on the right side of the frame shows a view of a body of water. The text "PROJECT CONTROLS" is overlaid in large, white, bold, sans-serif capital letters across the middle of the image.

PROJECT CONTROLS

STEERING COMMITTEES AND WORKING GROUPS

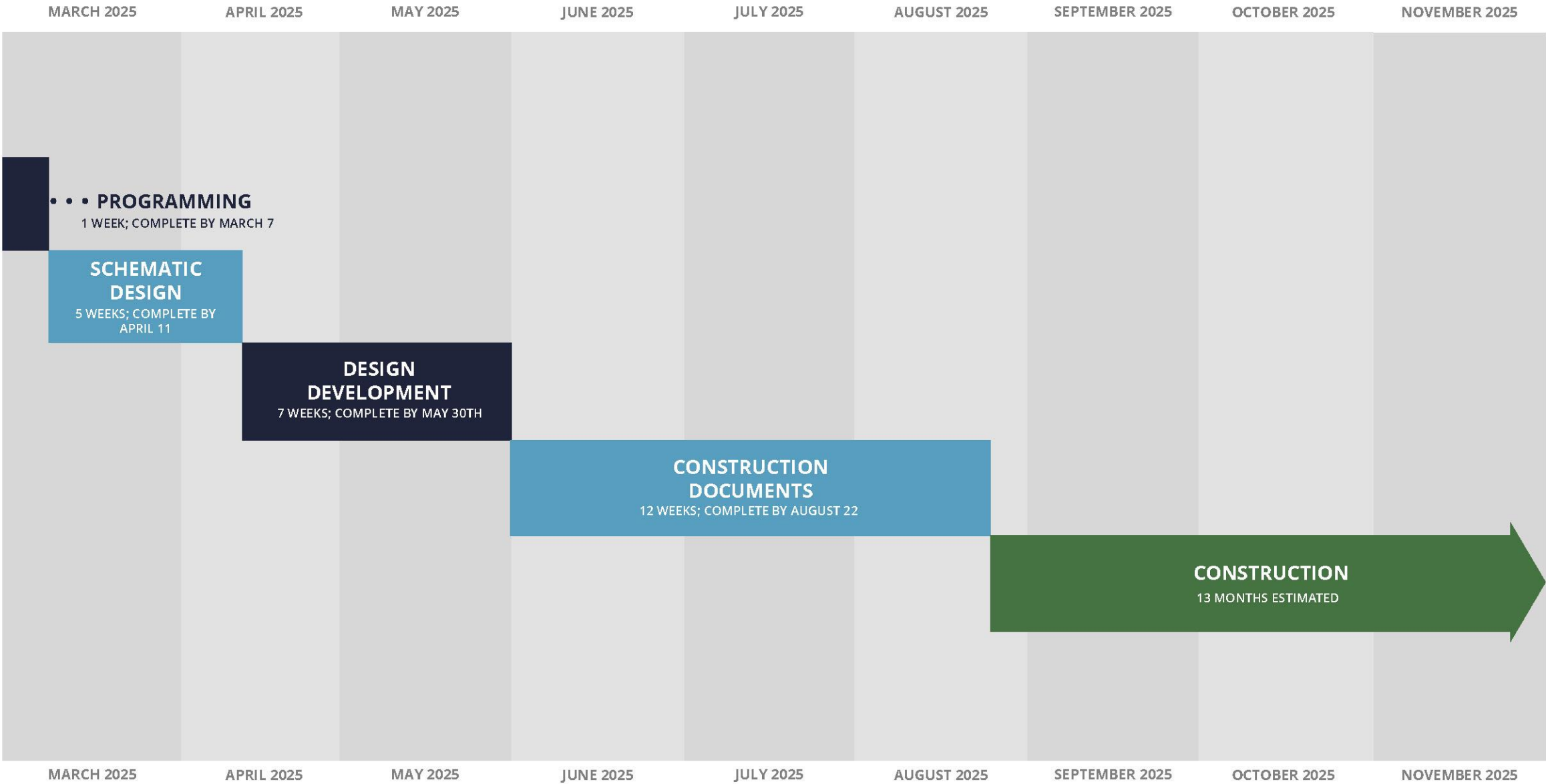
ENGAGING YOUR STAKEHOLDERS



DESIGN SCHEDULE & QUICK START

PLANNING & DESIGN

CONSTRUCTION





COLLABORATING WITH CM & OWNER'S REP

- CM at Risk
- Cost Estimation
- Constructability Reviews with CM
(How Early?)
- Ability to work within Title 61



SITE VISITS & REPORTS FROM CONSULTANTS

FIELD REPORT

Photo 6 – Inside new Surgery addition. Concrete flooring poured and passed testing. Roof decking installed. Roof drains hanging. Materials stored in space.



Photo 7 – Skybridge steel framing with metal deck installed.





HEALTHCARE SPECIALISTS

Experience and proven
healthcare project team
ready to serve OMRF

QUICK START

REES' initial planning work
provides our team the
ability to quickly move
your project forward.

100% CLIENT SATISFACTION

We're ready to do what it
takes to make your project a
success. Our goal is to
anticipate your needs and
exceed your expectations.

An aerial photograph of a modern building's courtyard. The building has a light-colored facade and large windows. In the center, there is a paved area with a large, semi-circular orange and white graphic. Several cars are parked in the courtyard: a dark blue sedan, a white sedan, a light blue sedan, and a white sedan. There are also some trees and a small landscaped area with a sign that reads "DAVID R. BROWN MD. ADVANCED HUMAN IMAGING CENTER Made possible by The Samuel Roberts Noble Foundation". The text "THANK YOU" is overlaid in large, white, bold letters across the center of the image.

THANK YOU